



TRANSROMANICA

Route of the Romanesque | Portugal



Cultural Route
of the Council of Europe

COUNCIL OF EUROPE



CONSEIL DE L'EUROPE



Monastery of Paço de Sousa

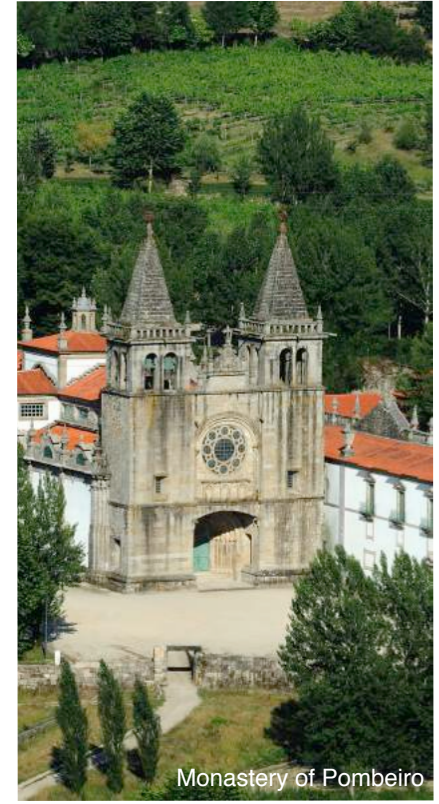
Route of the Romanesque | Portugal

Welcome to a Route that invites you on an inspiring journey through places with History, near singular monastic ensembles, churches, chapels, memorials, bridges, castles and stately towers. The Monastery of Paço de Sousa is a milestone of Romanesque architecture closely connected with one of the most powerful families in Portuguese History, in the Middle Age. The Monastery of Travanca standing out for the presence of the highest medieval tower of Portugal. The Monasteries of Pombeiro and Ferreira and the Castle of Arnoia are further highlights along this Route, internationally connected as a part of TRANSROMANICA since 2009.



Tip:

Download the application to mobile devices, available for Android, iOS and Windows (in four languages), where you will find extensive information of the Route of the Romanesque.



For more information on the Route, please visit: www.rotadoromanico.com



Cultural Route of the Council of Europe

TRANSROMANICA connects the common Romanesque heritage of eight European countries: Germany, Austria, Portugal, Spain, France, Italy, Serbia and Romania. Along the route, you can find historic buildings of this era. Romanesque style emerged in the late 10th century as a new form of architecture. Magnificent cathedrals, monasteries and peaceful churches and castles held witnesses to this major European era. The first Europe formed in the Middle Ages is the origin of our present European Community. Romanesque is unity in diversity; it is also an enchanted world full of allegory and regulation, power and imagination, deformation and order representing the Medieval period. Romanesque is the Middle Ages. Romanesque is TRANSROMANICA!



TRANSROMANICA is committed to promoting the European heritage of the Romanesque art and architecture, and develop tourism so as to support sustainable regional and economic development. The association has the following goals. It strives to promote its member regions, buildings and sites, and make them accessible to the public. Through sustainable cultural tourism development and a targeted tourism marketing, the conservation of buildings will be achieved.



For more information on TRANSROMANICA, please visit:
www.transromanica.com

COUNCIL OF EUROPE



CONSEIL DE L'EUROPE

In August 2007, TRANSROMANICA was officially recognized as a "Major Cultural Route of the Council of Europe". As such it provides a concrete demonstration of the fundamental principles of the Council of Europe: human rights, cultural democracy, cultural diversity and identity, dialogue, mutual exchange and enrichment across boundaries and centuries.

The Cultural Routes programme was launched by the Council of Europe in 1987. Its objective is to demonstrate in a visible way, by means of a journey through space and time, how the heritage of the different countries and cultures of Europe represents a shared cultural heritage.

www.culture-routes.net



UNESCO World Heritage Sites

UNESCO has committed itself to the preservation of the cultural and natural heritage of humanity. These five TRANSROMANICA sites have been listed as UNESCO World Heritage.

Collegiate Church, Castle and Old Town, Quedlinburg

The former collegiate church St. Servatii is one of the most famous high Romanesque buildings in Germany.

www.quedlinburg.de



Collegiate Church of Quedlinburg

Address: Schlossberg 1, 06484 Quedlinburg, Germany

Opening hours	Apr - Oct	Nov - Mar
Tue - Sun	10:00 - 18:00	10:00 - 16:00
Holidays	10:00 - 18:00	10:00 - 16:00

Cathedral, Torre Civica and Piazza Grande, Modena

Modena Cathedral is one of the most important witnesses of the Romanesque era which flourished especially in Northern Italy.

www.unesco.modena.it/en



UNESCO Site of Modena

Address: Corso Duomo, 41100 Modena, Italy

Opening hours	Jan - Dec	Ghirlandina
daily	07:00 - 12:30 15:30 - 19:00	special opening hours and fares

UNESCO World Heritage Sites

Stari Ras and Sopoćani

The Djurdjevi Stupovi Monastery, built on a hill above the city of Novi Pazar, within the complex of Stari Ras, is among the jewels of Serbian medieval state.

www.serbia.travel



Djurdjevi Stupovi Monastery

Address: 36300 Novi Pazar, Serbia

Apr - Oct	Nov - Mar
06:00 - 19:00	06:00 - 16:00

Opening hours
daily

With the intention to create a permanent source of Serbian spirituality, art and culture, King Stefan Uros I built Sopoćani Monastery in the second half of the 13th century.

www.serbia.travel



Sopoćani Monastery

Address: 36300 Novi Pazar, Serbia

Apr - Oct	Nov - Mar
06:00 - 19:00	06:00 - 16:00

Studenica Monastery

The Romanesque decoration of St. Marry's church in Studenica represents one of the richest programmatic and stylistic creations in the Serbian medieval art.

www.manastirstudenica.rs



Studenica Monastery

Address: 116, Brezova 36343, Serbia

Opening hours	Jan - Dec
daily	07:00 - 19:00

For more information on UNESCO, please visit: www.unesco.org



Wine & Culinary Delights

A visit of the Romanesque sites along TRANSROMANICA can always be combined with some culinary delights.

Charolais cattle is as characteristic of the countryside around Paray as Romanesque art. Taste the beef on a Wednesday, day of the cattle market, in Saint-Christophe-en-Brionnais!



Still today „**Salzwedeler Baumkuchen**“ from Saxony-Anhalt is manually produced according to a secret recipe. Just like 200 years ago, it bakes on a turning wooden roll over the open fire.



The "**Vinho Verde**" is a slightly sparkling white or red wine from the North of Portugal, which is unique in the world!



Ethno Household äekler, in the Serbian village of Rudno, offers **local bread, buckwheat pancakes and yoghurt made in a conserved natural environment.**



When in Castile and León be sure to try the delicious local products and drink **fine wine from the Ribera del Duero.** They can be purchased at shops & restaurants of Santo Domingo.

Wine & Culinary Delights

The **Traditional Balsamic Vinegar** of Modena is taken from cooked grape must, matured for natural fermentation and slow acidification.



Carinthian food is characterized by a variety of fish specialties. You can enjoy the **delicious freshwater fish** at beautiful places, ideally served with a glass of Carinthian wine.



Visit the old Saxon settlement **Jidvei** which is situated 54 km from Alba Iulia. The **vineyard** is one of the most prestigious in the country.



Among the Italian provinces, Pavia holds the primacy of largest rice producer. Taste the **"White Gold of the Plain"** together with one of the significant wines from the territory of the Oltrepo pavese.

Close to the Abbey of Vezzolano you can taste the **typical Monferrato cuisine and various wines** - including the Malvasia of Castelnovo Don Bosco D.O.C. - **and spirits** obtained from the distillation of the marc.



Discover Actively



Saxony-Anhalt

Flying across the Rappbodeltsperre, discovering the Harz mountains by Segway and running down a dam wall: these activities guarantee fun and adrenaline.

www.harzdrenalin.de



Sousa, Douro & Tâmega

Did you know that the Paiva is the best river in Portugal, and one of the best in Europe, to go rafting? It offers a lot of adrenaline, even for those who usually practice this sport.

www.rotadoromanico.com



Burgundy

Paray-le-Monial is the centre of various biking routes, all of them spotted with other Romanesque churches.

www.tourisme-paraylemonial.fr



Castile and León

Join in and be a pilgrim on one of the most important cultural routes, the Way of Saint James, by foot or by bicycle. You will enjoy a unique experience.

www.turismo-castillayleon.com



**ROMANESQUE
BY BIKE**
ROUTES AMONG
NATURE AND ART
IN THE PROVINCE
OF MODENA

Modena

Follow the "Romanesque by Bike" trail and discover the beauty of the area between nature and art.

www.visitmodena.it

Discover Actively



Serbia

With 200 sunny days per year, Kopaonik, "Mountain of the Sun", is Serbia's largest mountain range.

www.serbia.travel



Pavia

Hiking, cycling, horse-back riding or driving: Pavia and its surroundings offer numerous touristic routes to discover the area. One of them is the European Cultural Route Via Francigena, the ancient Roman road connecting Rome with the rest of Europe.

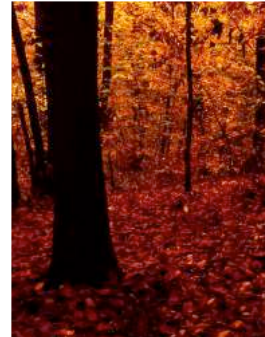
www.visitpavia.com



Alba Iulia

In Alba Iulia you can rent a bike and have a 5 km tour inside the entrenchments or ride a horse inside the fortress. The Adventure Park is also a choice for the adventure amateurs of all ages.

www.visitalbailulia.com



Vezzolano

Hiking along the "Trail in the wood" you can discover the parks and protected areas stretching from the Po river bank to the hills. One of them is Muscandia's Valley with its unusual level of environmental quality allowing the formation of habitats of rare plants and animals.

www.muscandia.it



Carinthia

Enjoy the landscape and historical attractions along the 45 km TRANSROMANICA-Tour. You pass by the Carinthian lakes, ride through the "Schieflinger Moor" to Maria Wörth.

www.outdooractive.com



Event Highlights



Festival Filosofia in Modena

September

www.festivalfilosofia.it



Festival du Brionnais

Early August

www.musique-en-brionnais.com



Ultrapadum Festival in Pavia

June to September

www.festivalultrapadum.org



"Unter großen Bögen" | "Under great arches"

Festival at the "Romanesque Road" in Saxony-Anhalt

www.strassederromanik.de



The Seasons of Vezzolano

From April to December - four dates

www.astinternational.it



TRANSROMANICA Journey of Sound

Medieval concerts at all Carinthian sites in August

www.facebook.com/transromanica.kaernten

Event Highlights



Celebration of "Los Jefes" in Santo Domingo de Silos

Last Saturday in January

www.abadiadesilos.es



Days of Queen Jelenai in Gradac Monastery

May or June

www.raska-turizam.rs



"Endoenças de Entre-os-Rios" in M. Canaveses and Penafiel

March or April, on Maundy Thursday

www.cm-marco-canaveses.pt | www.cm-penafiel.pt



Changing the Guard Ceremony in Alba Iulia

Every day between April and September at 12:00 o'clock

www.visitalbaulia.com

To receive information and dates of further events along TRANSROMANICA, follow us on Facebook:



www.facebook.com/transromanica



Imprint

Editing & Design

TRANSROMANICA Association
Danzstraße 1
39104 Magdeburg
Germany

1. Edition / January 2016

Contact

Ms. Christin Prange
Managing director
Phone: 0049 (0) 391 / 73 84 350
c.prange@transromanica.com

TRANSROMANICA online

www.transromanica.com
www.culture-routes.net/routes/transromanica



Rota do Românico - Contact

Praça D. António Meireles, 45
4620-130 Lousada - Portugal

Phone: (+351) 918 116 488
rotadoromanico@valsousa.pt
www.rotadoromanico.com



Picture Credits

p.2: Rota do Românico; **p.3:** Rota do Românico; **p.4:** Rota do Românico; **p.5:** TRANSROMANICA; **p.6:** Investitions- und Marketinggesellschaft Sachsen-Anhalt mbH (IMG), Paolo Terzi/Archivio Museo Civico; **p.7:** National Tourism Organisation of Serbia (NTOS); **p.8:** Centre d'Etudes des Patrimoines Culturels du Charolais-Brionnais (CEP), IMG, Rota do Românico, NTOS, Official Website of Tourism of Junta de Castilla y León; **p.9:** Giovanni Tagini/Archivio Museo Civico d'Arte di Modena, Z. Czajlik, Kärnten Werbung/Martin Steinhäler, Comune di Pavia, Info-point InCollina; **p.10:** Harzdrenalin, Rota do Românico, Alain Doire/Bourgogne Tourisme, Junta de Castilla y León, StudioUndici; **p.11:** NTOS, Comune di Pavia, autografo, Ass. Terra/Boschi/Gente e Memorie, Kärnten Werbung/Franz Gerdl; **p.12:** CEP, Bruno Marchetti/Archivio des Comune di Modena, festivalultrapadium.org, Bärbel Schön/LTV, Restauri Nicola di Aramengo, Burgenstadt Friesach; **p.13:** Benito Arnaiz Alonso, NTOS, Rota do Românico, autografo.